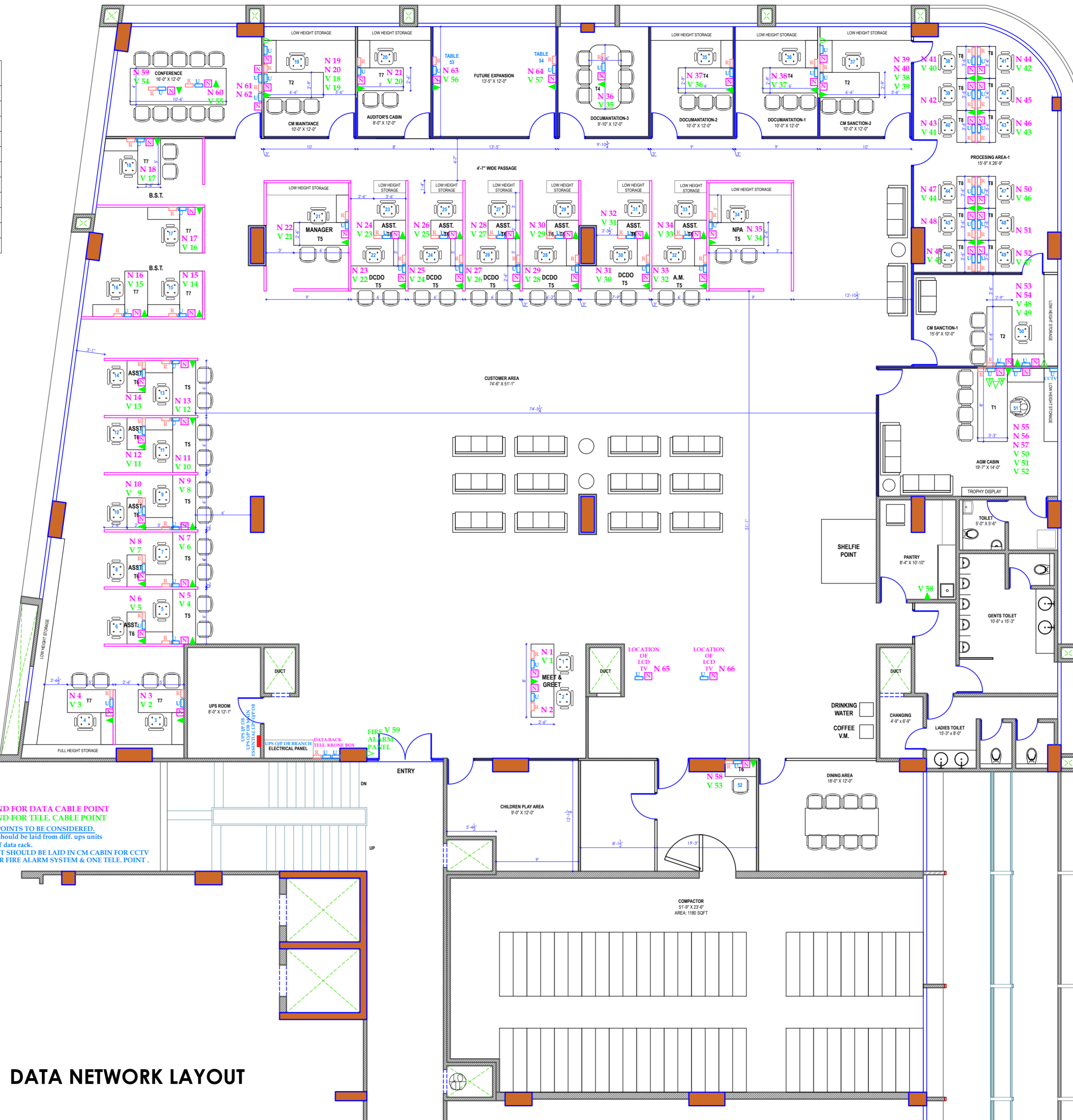


TABLE SIZE			
TYPE	NOS	TABLE SIZE	NAME
T1	01	8'-0" x 3'-3" x 2'-6" ht	AGM TABLE
T2	03	6'-6" x 2'-9" x 2'-6" ht	CM TABLE
T4	03	6'-0" x 2'-9" x 2'-6" ht	DOCUMENTATION
T5	13	6'-0" x 2'-6" x 2'-6" ht	DCDO/AM/CRD/SARB
T6	12	3'-6" x 2'-0" x 2'-6" ht	ASSISTANT
T7	06	5'-0" x 2'-6" x 2'-6" ht	AUDITOR AND B.S.T.
T8	12	3'-6" x 2'-0" x 2'-6" ht	WORK STATION
T9	01	10'-6" x 4'-0" x 2'-6" ht	CONFERENCE
T10	01	8'-0" x 2'-6" x 2'-6" ht	MEET AND GREET
52	TABLES		

APPROXIMATE CARPET AREA: 10324 SQFT

LEGEND - FLOOR JUNCTION	
	300 X 300 X 40 mm FLOOR JUNCTION BOX.
	150 X 150 X 40 mm FLOOR JUNCTION BOX.
	UPS / RAW POWER - PIPE LINE.
	DATA / TELE. - PIPE LINE.
	20 / 25 mm DIA. PIPE BEND.
LEGEND - BACKUPPOWER	
	2 NOS. 6 A. SOCKET WITH ONE NO. 6 A. SWITCH.
	2 NOS. 6 A. SOCKET + ONE NO. 16 A. SOCKET WITH ONE NO. 16 AMP. SWITCH WITH INDICATOR.
	UPS DB - 1/P DB & Q/P DB.
LEGEND - NETWORK	
	COMPUTER DATA I/O NODE.
	INTERCOM TELE. RJ 11 JACK POINT.
	DIRECT TELE. RJ 11 JACK POINT.
	IP TELE. RJ 45 JACK POINT.
	FAX TELE. RJ 11 JACK POINT.

N - STAND FOR DATA CABLE POINT
V - STAND FOR TELE. CABLE POINT
ESSENTIAL DB - FOLLOWING POINTS TO BE CONSIDERED.
1] For data rack - two ups points should be laid from diff. ups units for continuous power supply of data rack.
2] ONE SEPARATE UPS CIRCUIT SHOULD BE LAID IN CM CABIN FOR CCTV
3] 6 A. S. PLUG UPS SUPPLY FOR FIRE ALARM SYSTEM & ONE TELE. POINT.

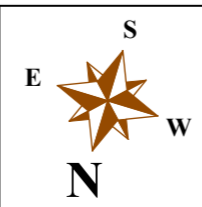


DATA NETWORK LAYOUT

PROPOSED LAYOUT of
"RACPC East" BRANCH (15355), AT CHANDKHEDA
AHMEDABAD, STATE BANK OF INDIA

LAYOUT-17

NOTE :
*ALL DIMENSIONS ARE TO BE READ. NOT TO BE MEASURED.
*ALL DIMENSIONS ARE IN FEET - INCHES
*BEFORE STARTING CONSTRUCTION THE CONTRACTOR/SUB CONTRACTOR SHALL REVIEW AND VERIFY ALL DRGS. DIMENSION AND CONDITIONS. DISCREPANCIES IN THE DRGS. OR IN BETWEEN THE DRGS AND ACTUAL FIELD CONDITIONS SHALL BE REPORTED TO THE ARCHITECTS BEFORE STARTING CONSTRUCTION.
*THE ARCHITECTS SHALL NOT BE RESPONSIBLE IN ANY WAY FOR THE CONTRACTOR/SUB CONTRACTOR COMPLIANCE WITH SAFETY AND REGULATION.
*ANY AMBIGUITY FOUND. CONTACT ARCHITECT / INTERIOR DESIGNER BEFORE EXECUTION.
*DWGS. ARE PROPERTY OF "STUDIO 919 ARCHITECTS" & SHALL NOT BE COPY WITHOUT PERMISSION



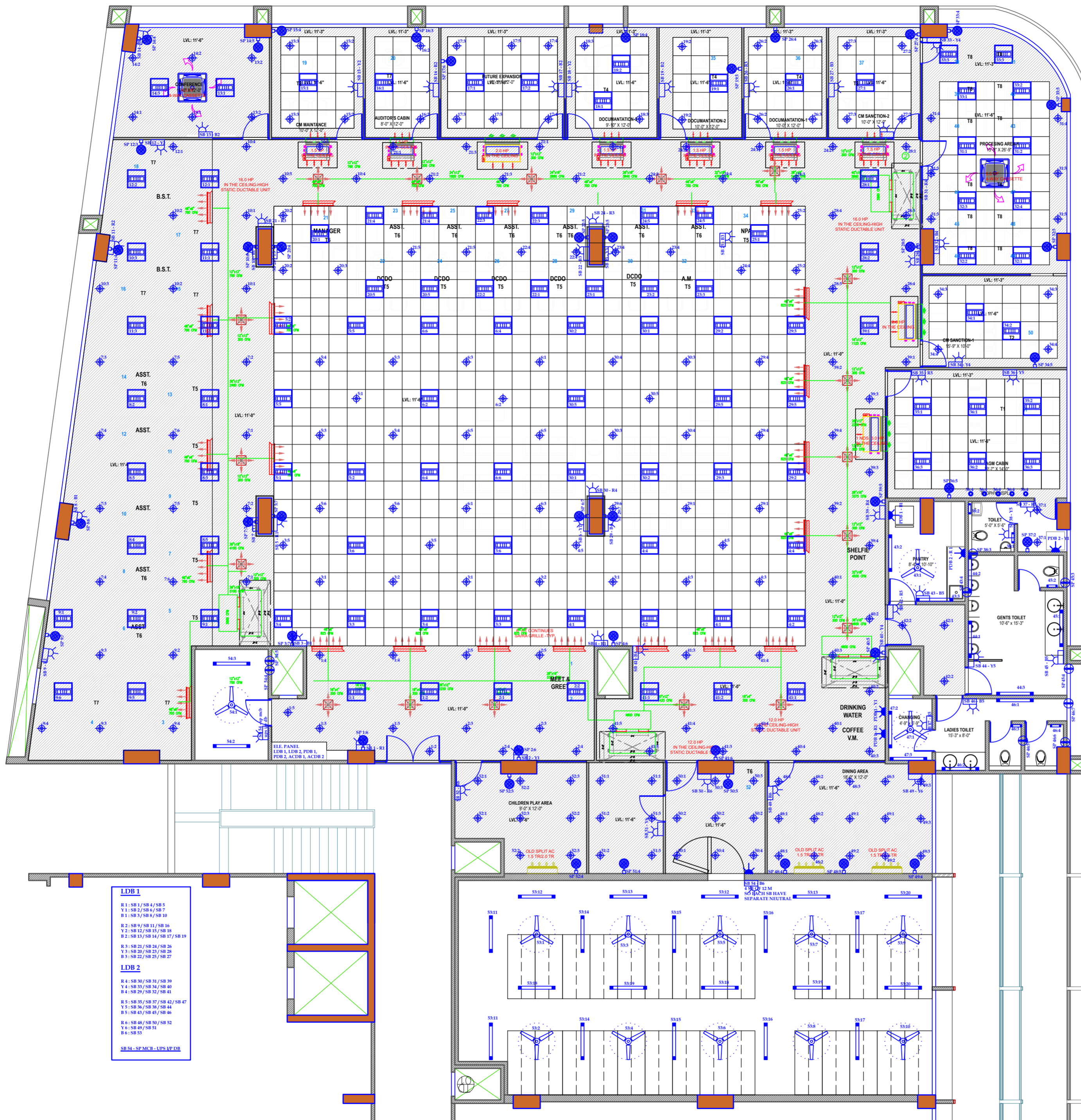
REVISIONS		
REV. NO.	DATE	REMARK
001	05.09.2024	FOR APPROVAL

JOB NO. SBI-RACPC
DRG. NO. 01
SCALE: NTS
DRG. BY: SHAILESH
CHECKED: DEVDATT
DATE: 08.08.2024

Architect
DEVDATT PANDYA
+91 9879 234 919

STUDIO 919 ARCHITECTS
1203-1204, Colonnade - 2, Behind Rajpath Club, off S.G. highway,
Ahmedabad - 380054 Ph. +91 9879234919, Email: 919studio@gmail.com

* DWGS. ARE PROPERTY OF "STUDIO 919" & SHALL NOT BE COPY WITHOUT PERMISSION



LEGEND-LIGHTS	
	1 X 36 W LED RECESS MOUNTED TUBE LIGHT (2' X 2').
	1 X 12 W LED DOWNLIGHTER LIGHT POINT / FIXTURE.
	1 X 20 W LED BATTEN TUBE LIGHT - 4' FEET
	1 X 10 W LED BATTEN TUBE LIGHT - 1' FEET
	1 X 3 W LED ROUND SMALL LIGHT POINT / FIXTURE.
	DECORATIVE 1 X 6 W LED ROUND EYE BALL LIGHT POINT / FIXTURE.
	DECORATIVE HANGING LIGHT POINT / FIXTURE.
LEGEND-FANS	
	FAN POINT (1200 MM SWEEP).
	WALL FAN.
	EXHAUST FAN.
LEGEND-SB/DB/PANEL	
	SWITCH BOARD WITH 6 A PLUG POINT.
	6 A SOCKET ONLY.
	6 A SWITCH + 6 A SOCKET - SEPARATE PLUG POINT.
	20 A / 25 A DP MCB WITH METAL ENCLOSURE FOR A.C. POINT.
	6/16 A SOCKET WITH SWITCH POINT.
	WALL FAN PLUG POINT.
	D B / E.L.E. PANEL.
	SPEAKER POINT.

LDB 1

R 1: SB 1 / SB 4 / SB 5
 Y 1: SB 2 / SB 6 / SB 7
 R 1: SB 3 / SB 8 / SB 10

R 2: SB 9 / SB 11 / SB 16
 Y 2: SB 12 / SB 15 / SB 18
 R 2: SB 13 / SB 14 / SB 17 / SB 19

R 3: SB 21 / SB 24 / SB 26
 Y 3: SB 20 / SB 23 / SB 28
 R 3: SB 22 / SB 25 / SB 27

LDB 2

R 4: SB 30 / SB 31 / SB 39
 Y 4: SB 33 / SB 34 / SB 40
 R 4: SB 29 / SB 32 / SB 41

R 5: SB 35 / SB 37 / SB 42 / SB 47
 Y 5: SB 36 / SB 38 / SB 44
 R 5: SB 43 / SB 45 / SB 46

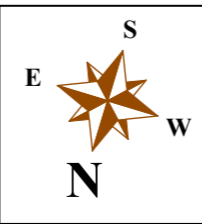
R 6: SB 48 / SB 50 / SB 52
 Y 6: SB 49 / SB 51
 R 6: SB 53

SB 54 - SP MCB - UPS EP DB

PROPOSED LAYOUT of
"RACPC East" BRANCH (15355), AT CHANDKHEDA
AHMEDABAD, STATE BANK OF INDIA

LAYOUT-17

NOTE :
 *ALL DIMENSIONS ARE TO BE READ, NOT TO BE MEASURED.
 *ALL DIMENSIONS ARE IN FEET - INCHES.
 *BEFORE STARTING CONSTRUCTION THE CONTRACTOR/SUB CONTRACTOR SHALL REVIEW AND VERIFY ALL DRGS, DIMENSION AND CONDITIONS, DISCREPANCIES, IN THE DRGS, OR IN BETWEEN THE DRGS AND ACTUAL FIELD CONDITIONS SHALL BE REPORTED TO THE ARCHITECTS BEFORE STARTING CONSTRUCTION.
 *THE ARCHITECTS SHALL NOT BE RESPONSIBLE IN ANY WAY FOR THE CONTRACTOR/SUB CONTRACTOR COMPLIANCE WITH SAFETY AND REGULATION.
 *ANY AMBIGUITY FOUND, CONTACT ARCHITECT / INTERIOR DESIGNER BEFORE EXECUTION.
 *DWGS. ARE PROPERTY OF "STUDIO 919 ARCHITECTS" & SHALL NOT BE COPY WITHOUT PERMISSION



REVISIONS		
REV. NO.	DATE	REMARK
R00	05.09.2024	FOR APPROVAL

JOB NO. SBI-RACPC
 NO. 01
 SCALE: NTS
 DRG. BY: SHAILESH
 CHECKED: DEV DATT
 DATE: 08.08.2024

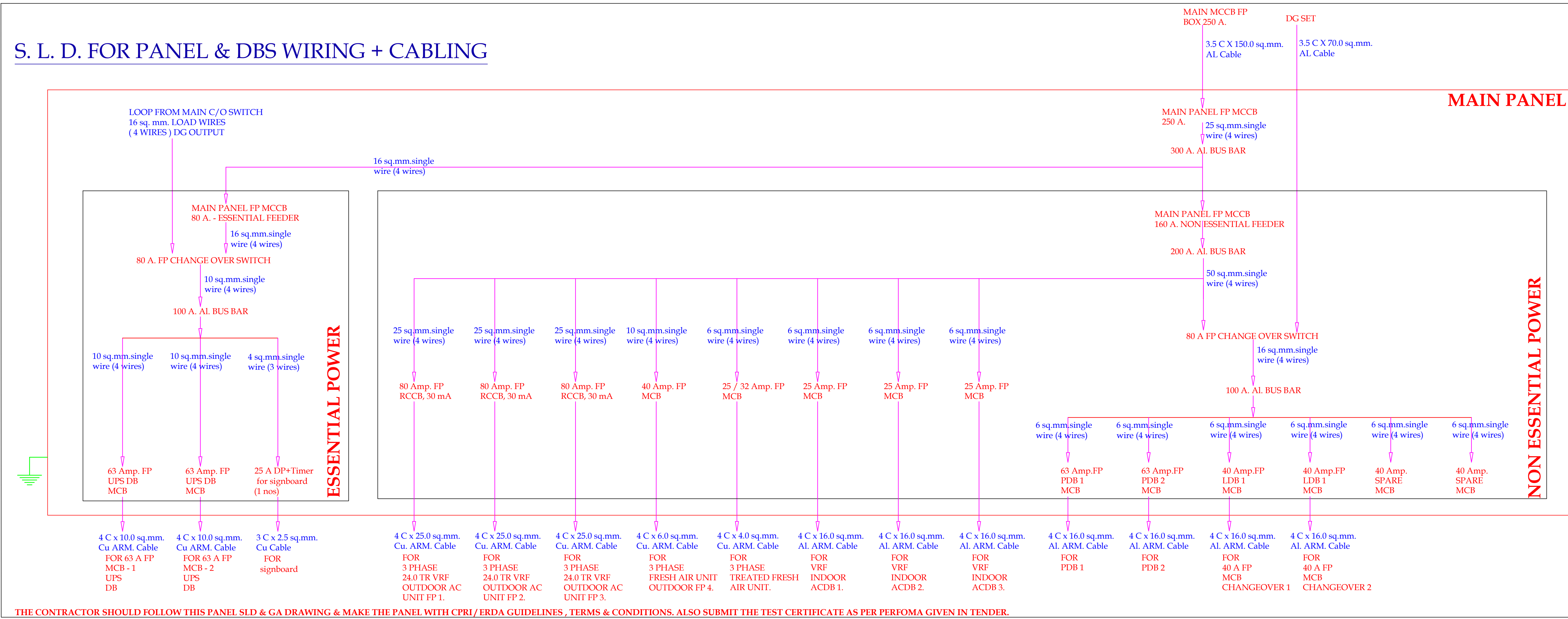
Architect
DEV DATT PANDYA
 +91 9879 234 919

STUDIO 919 ARCHITECTS
 1203-1204, Colonnade - 2, Behind Rajpath Club, off S.G. Highway,
 Ahmedabad - 380054 Ph. +91 9879234919, Email: 919studio@gmail.com

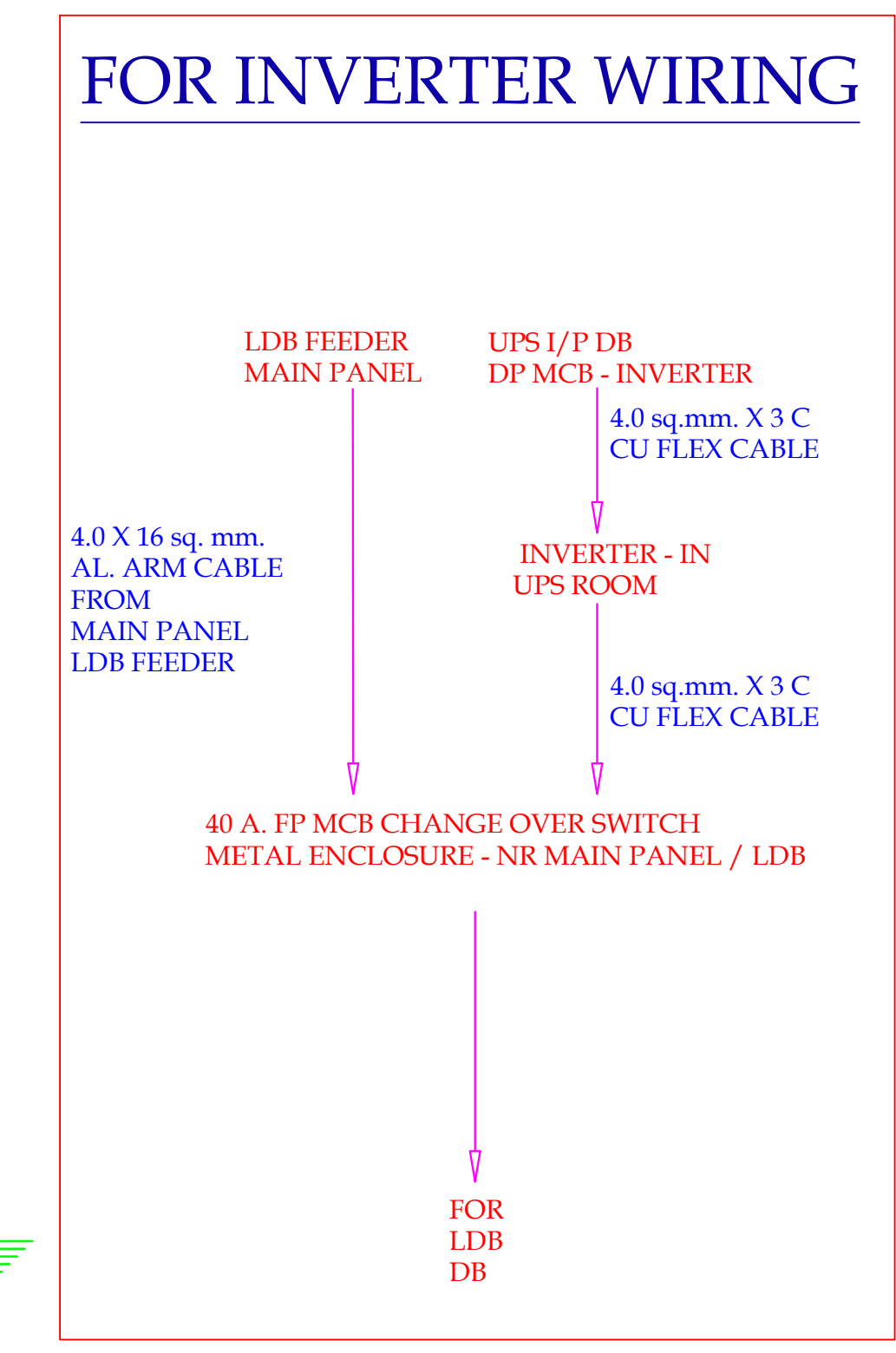
ELECTRICAL LAYOUT

* DWGS. ARE PROPERTY OF "STUDIO 919" & SHALL NOT BE COPY WITHOUT PERMISSION

S. L. D. FOR PANEL & DBS WIRING + CABLING



THE CONTRACTOR SHOULD FOLLOW THIS PANEL SLD & GA DRAWING & MAKE THE PANEL WITH CPRI/ERDA GUIDELINES, TERMS & CONDITIONS. ALSO SUBMIT THE TEST CERTIFICATE AS PER PERFORMA GIVEN IN TENDER.



INSTRUCTIONS ON MAIN PANEL.

80 A MAIN MCCB - ESSENTIAL FEEDER
 DO NOT SWITCH OFF POWER IN NIGHTS.

160 A MAIN MCCB - NON ESSENTIAL FEEDER
 SWITCH OFF POWER IN NIGHTS.

250 A MAIN MCCB - MAIN FEEDER
 SWITCH OFF POWER IN CASE OF EMERGENCY.

CLIENTS : - ARCH. DEVDUTT PANDYA, STUDIO 919 ARCHICATES, AHMEDABAD. LOCATION : - SBI RACPC EAST - CHANDKHEDA BRANCH, AHMEDABAD, AAO.	PROJECTTYPE: ELE. CONTROL DIAGRAM.	REV.NO.	CHECKEDBY KAMLESH CHOKSHI (B.E. ELECTRICAL)	DISHITA ELECTRICALS ELECTRICAL CONSULTANT GF, 30/B, UMA COLONY, WAGHODIA ROAD, VADODARA - 390019. 094260 32096(M) , 081288 74936 (M). kamleshchokshi@yahoo.com, dishitaelectricals@yahoo.com, chokshikamlesh@gmail.com
	DATE 19 10 2024.	REV.DATE	SCALE	

**CABLE MEASUREMENT SHEET FOR STATE BANK OF INDIA, RACPC EAST - CHANDKHEDA
BRANCH, AHMEDABAD, AAO.**

SR. No.	MAIN PANEL	CABLE MEASUREMENT											EARTHING DETAILS		
		3 C X 2.5 sq. mm. Cu. CABLE	4 C X 4.0 sq. mm. Cu. CABLE	4 C X 6.0 sq. mm. Cu. CABLE	4 C X 10.0 sq. mm. Cu. CABLE	4 C X 25.0 sq. mm. Cu. CABLE	4 C X 16.0 sq. mm. Al. CABLE	3.5 C X 150.0 sq. mm. Al. CABLE	50 sq. mm. LOAD WIRES	3 C X 10.0 sq. mm. Cu. CABLE	3 C X 6.0 sq. mm. Cu. CABLE	3 C X 4.0 sq. mm. Cu. CABLE	4.0 sq. mm. Cu. Flexible wire	6.0 sq. mm. Cu. Flexible wire	16.0 sq. mm. Cu. Flexible wire
		MTRS.	MTRS.	MTRS.	MTRS.	MTRS.	MTRS.	MTRS.	MTRS.	MTRS.	MTRS.	MTRS.	MTRS.	MTRS.	MTRS.
BOQ ITEM NO.	BOQ F 21.1	BOQ F 21.2	BOQ F 21.3	BOQ F 21.4	BOQ F 21.5	BOQ F 21.6	BOQ F 21.7	BOQ F 21.8	BOQ F 21.9	BOQ F 21.10	BOQ F 25.11	BOQ E 20.3	BOQ E 20.2	BOQ E 20.1	

1	MCCB.							12								
2	MAIN PANEL.						140							80		
3	DG SET.															
4	SIGN BOARD.	120														
5	63 A. FP MCB 1 - UPS I/P DB.				13									80		
6	64 A. FP MCB 2 - UPS I/P DB.				13											
7	LDB 1.						5					5				
8	LDB 2.						5					2				
9	PDB 1.						6					5				
10	PDB 2.						6					2				
11	VRF INDOOR ACDB 1.						6					5				
12	VRF INDOOR ACDB 2.						7					2				
13	VRF INDOOR ACDB 3.						6					2				
14	MAIN PANEL TO 24.0 TR VRF OUTDOOR AC UNIT- FP 1.					50							50			
15	MAIN PANEL TO 24.0 TR VRF OUTDOOR AC UNIT- FP 2.					50							50			
16	MAIN PANEL TO 24.0 TR VRF OUTDOOR AC UNIT- FP 3.					50							50			
17	MAIN PANEL TO FRESH AIR UNIT - FP 4.			40								20				
18	MAIN PANEL TO TREATED FRESH AIR UNIT .		10									10				
19	UPS TO UPS I/P DB.									3						
20	UPS TO UPS I/P DB.									3						
21	UPS TO UPS O/P DB IN UPS ROOM.									3						
22	UPS TO UPS O/P DB IN UPS ROOM.									3						
23	UPS O/P DB in UPS ROOM TO UPS O/P DB 1 - BRANCH .										15					
24	UPS O/P DB in UPS ROOM TO UPS O/P DB 2 - BRANCH .										15					
25	UPS O/P DB TO UPS O/P DB ESSENTIAL DB.											6				
26	UPS I/P DB TO INVERTER.										2					
27	INVERTER TO FP MCB CHANGEVER NEAR PANEL.										9					
28	INVERTER TO FP MCB CHANGEVER NEAR PANEL.										9					
	TOTAL .	120	10	40	26	150	41	140	12	12	50	6	53	150	160	0

29	DATA CAT 6 - 2 WIRES FROM SERVER DATA RACK TO TELE. KRONE BOX - BOQ NO . C - 7										2 WIRES OF 20 MTRS.	40	MTRS.			
----	--	--	--	--	--	--	--	--	--	--	---------------------	----	-------	--	--	--

ELE. POINTS FOR STATE BANK OF INDIA , RACPC EAST - CHANDKHEDA BRANCH, AHMEDABAD, AAO.

S.B. No.	Location of S.B.	MCB PHASE - LOOP FROM SB - CKT. DAETAILS. - LDB.	MCB PHASE - LOOP FROM SB - CKT. DAETAILS. - PDB.	MCB PHASE - LOOP FROM SB - CKT. DETAILS. - ACDB.	modular box size	1 ½w. 1L.	1 ½w. 2L.	1 ½w. 3L.	on board plug	S. Plug	S.S.	S.S.	A.C.	1x36W led fitting	1x12W led down	1x10W	Ex. Fan	Fan	1x20W led wall	Wall Fan
						BOQ A.1.1	BOQ A.1.2	BOQ A.1.3	BOQ A.1.5	BOQ A.1.6	BOQ A.2.1	BOQ A.2.2	BOQ A.3	BOQ B.4.1	BOQ B.4.2	BOQ B.4.3	BOQ B.4.5	BOQ B.4.6	BOQ B.4.7	BOQ B.4.8
SB 1	entrance left side on column.	LDB 1 - R 1.			12 M - 1 no + 2 M - 1 no.	2	3		1	1				2	6					1
SB 2	entrance right side on column.	LDB 1 - Y 1.			12 M - 1 no + 2 M - 1 no.	2	3		1	1				2	6					1
SB 3	on wall of duct nr ups room.	LDB 1 - B 1.			12 M - 1 no + 2 M - 1 no.		5	1	1	1				6	7					1
SB 4	on wall of duct nr meet & greet table.	loop from SB 1 - R 1.			12 M - 1 no + 2 M - 1 no.		5		1	1				6	4					1
SB 5	on column nr. Table no. 9.	loop from SB 4 - R 1.			12 M - 1 no + 2 M - 1 no.		6		1	1				5	7					1
SB 6	on center column.	loop from SB 2 - Y 1.			12 M - 1 no + 2 M - 1 no.		6		1	1				5	7					1
SB 7	on column nr. Table no. 9.	loop from SB 7 - Y 1.			12 M - 1 no + 2 M - 1 no.		6		1	1					12					1
SB 8	on column b/h. Table no. 10.	loop from SB 3 - B 1.			12 M - 1 no + 2 M - 1 no.	4	1		1	1				6						1
SB 9	on column nr. Table no. 4.	LDB 1 - R 2.			12 M - 1 no + 2 M - 1 no.	2	4		1	1				5	5					1
SB 10	on column nr. Table no. 17.	loop from SB 8 - B 1.			12 M - 1 no + 2 M - 1 no.		5		1	1				1	9					1
SB 11	on column b/h. Table no. 17.	loop from SB 9 - R 2.			8 M - 1 no + 2 M - 1 no.	3			1	1				3						1
SB 12	on partition nr. Table no. 18.	LDB 1 - Y 2.			6 M - 1 no + 2 M - 1 no.	1	1		1	1				2	1					1
SB 13	on partition entrance of conference room.	LDB 1 - B 2.			2 M - 1 no.	1	1							1	2					
SB 14	on column of conference room.	loop from SB 13 - B 2.			8 M - 1 no + 2 M - 2 no.	1	2		1	2				1	4					1
SB 15	on partition of CM maintenance cabin. - table no. 19.	loop from SB 12 - Y 2.			8 M - 1 no + 2 M - 1 no.	1	2		1	1				1	4					1
SB 16	on partition of auditor cabin. - table no. 20.	loop from SB 11 - R 2.			6 M - 1 no + 2 M - 1 no.	1	1		1	1				1	2					1
SB 17	on partition of future expansion cabin.	loop from SB 14 - B 2.			12 M - 1 no + 2 M - 1 no.	2	3		1	1				2	6					1
SB 18	on partition of document cabin 3.	loop from SB 15 - Y 2.			8 M - 1 no + 2 M - 1 no.	2	1		1	1				2	2					1
SB 19	on partition of document cabin 2.	loop from SB 17 - B 2.			6 M - 1 no + 2 M - 1 no.	1	1		1	1				1	2					1
SB 20	on column nr. Manager Table no. 21.	LDB 1 - Y 3.			8 M - 1 no + 2 M - 1 no.	2	2		1	1				3	3					1
SB 21	on column nr. Manager Table no. 21.	LDB 1 - R 3.			8 M - 1 no.		5		1					2	8					
SB 22	on column nr. Table no. 28.	LDB 1 - B 3.			8 M - 1 no + 2 M - 1 no.	2	2		1	1				4	2					1
SB 23	on column nr. Table no. 30.	loop from SB 20 - Y 3.			8 M - 1 no + 2 M - 1 no.	3	1		1	1				3	2					1
SB 24	on column nr. Table no. 31.	loop from SB 21 - R 3.			8 M - 1 no.		5		1					2	8					
SB 25	on partition nr. NPA Table no. 34.	loop from SB 22 - B 3.			6 M - 1 no.	1	1		1					1	2					
SB 26	on partition of document cabin 1.	loop from SB 24 - R 3.			8 M - 1 no + 2 M - 1 no.	1	2		1	1				1	4					1
SB 27	on partition of CM sanction 2 cabin. - table no. 37.	loop from SB 25 - B 3.			8 M - 1 no + 2 M - 1 no.	1	2		1	1				1	4					1
SB 28	on column o/s. processing area.	loop from SB 23 - Y 3.			8 M - 1 no + 2 M - 1 no.	1	3		1	1				2	5					1
SB 29	on center column. - in front of pantry.	LDB 2 - B 4.			12 M - 1 no + 2 M - 1 no.	1	5		1	1				6	5					1
SB 30	on center column. - in front of table no. 30.	LDB 2 - R 4.			8 M - 1 no.		5		1					5	5					
SB 31	entrance - on partition of processing area.	loop from SB 30 - R 4.			8 M - 1 no.	2	3		1					2	6					

DATA TELE. POINTS FOR STATE BANK OF INDIA, RACPC EAST - CHANDKHEDA BRANCH, AHMEDABAD, AAO.

S.B. No.	Location of S.B.	UPS	UPS	UPS NO. ferruls	RPP	RAW POWER NO. ferruls	RJ-45	IP TELE.	I/O NO. ferruls	INTER COM TELE.	FAX TELE.	DIRECT TELE.	INTERCOM TELE. Ferruls	1 MTR. PATCH CORD	2 MTR. PATCH CORD
		BOQ A - 1.4	BOQ C - 5		BOQ C - 6		BOQ C - 8	BOQ C - 9		BOQ C - 15	BOQ C - 15	BOQ C - 15		BOQ C - 13	BOQ C - 14
1	MEET & GREET TABLE 1.		1	U 1	1	R 1	1		N 1	1			V 1	1	1
2	MEET & GREET TABLE 2.		1	U 2	1	R 2	1		N 2					1	1
3	OFFICER 1. TABLE 3.		1	U 3	1	R 3	1		N 3	1			V 2	1	1
4	OFFICER 2. TABLE 4.		1	U 4	1	R 4	1		N 4	1			V 3	1	1
5	OFFICER 3. TABLE 5.		1	U 5	1	R 5	1		N 5	1			V 4	1	1
6	ASST. 1.. TABLE 6.		1	U 6	1	R 6	1		N 6	1			V 5	1	1
7	OFFICER 4. TABLE 7.		1	U 7	1	R 7	1		N 7	1			V 6	1	1
8	ASST. 2.. TABLE 8.		1	U 8	1	R 8	1		N 8	1			V 7	1	1
9	OFFICER 5. TABLE 9.		1	U 9	1	R 9	1		N 9	1			V 8	1	1
10	ASST. 3.. TABLE 10.		1	U 10	1	R 10	1		N 10	1			V 9	1	1
11	OFFICER 6. TABLE 11.		1	U 11	1	R 11	1		N 11	1			V 10	1	1
12	ASST. 4.. TABLE 12.		1	U 12	1	R 12	1		N 12	1			V 11	1	1
13	OFFICER 7. TABLE 13.		1	U 13	1	R 13	1		N 13	1			V 12	1	1
14	ASST. 5.. TABLE 14.		1	U 14	1	R 14	1		N 14	1			V 13	1	1
15	B. S. T. OFFICER 1. TABLE 15.		1	U 15	1	R 15	1		N 15	1			V 14	1	1
16	B. S. T. OFFICER 2. TABLE 16.		1	U 16	1	R 16	1		N 16	1			V 15	1	1
17	B. S. T. OFFICER 3. TABLE 17.		1	U 17	1	R 17	1		N 17	1			V 16	1	1
18	B. S. T. OFFICER 4. TABLE 18.		1	U 18	1	R 18	1		N 18	1			V 17	1	1
19	CM MAINTENANCE. TABLE 19.		2	U 19 , U 20	1	R 19	2		N 19 , N 20	1		1	V 18 , V 19	2	1
20	AUDIOT'RS CABIN. TABLE 20.		1	U 21	1	R 20	1		N 21	1			V 20	1	1
21	MANAGER TABLE 21.		1	U 22	1	R 21	1		N 22	1			V 21	1	1
22	DCDO 1. TABLE 22.		1	U 23	1	R 22	1		N 23	1			V 22	1	1

DATA TELE. POINTS FOR STATE BANK OF INDIA, RACPC EAST - CHANDKHEDA BRANCH, AHMEDABAD, AAO.

S.B. No.	Location of S.B.	UPS	UPS	UPS NO. ferruls	RPP	RAW POWER NO. ferruls	RJ-45	IP TELE.	I/O NO. ferruls	INTER COM TELE.	FAX TELE.	DIRECT TELE.	INTERCOM TELE. Ferruls	1 MTR. PATCH CORD	2 MTR. PATCH CORD
	BOQ ITEM NO.	BOQ A - 1.4	BOQ C - 5		BOQ C - 6		BOQ C - 8	BOQ C - 9		BOQ C - 15	BOQ C - 15	BOQ C - 15		BOQ C - 13	BOQ C - 14
23	ASST. 6. TABLE 23.		1	U 24	1	R 23	1		N 24	1			V 23	1	1
24	DCDO 2. TABLE 24.		1	U 25	1	R 24	1		N 25	1			V 24	1	1
25	ASST. 7. TABLE 25.		1	U 26	1	R 25	1		N 26	1			V 25	1	1
26	DCDO 3. TABLE 26.		1	U 27	1	R 26	1		N 27	1			V 26	1	1
27	ASST. 8. TABLE 27.		1	U 28	1	R 27	1		N 28	1			V 27	1	1
28	DCDO 4. TABLE 28.		1	U 29	1	R 28	1		N 29	1			V 28	1	1
29	ASST. 9. TABLE 29.		1	U 30	1	R 29	1		N 30	1			V 29	1	1
30	DCDO 5. TABLE 30.		1	U 31	1	R 30	1		N 31	1			V 30	1	1
31	ASST. 10. TABLE 31.		1	U 32	1	R 31	1		N 32	1			V 31	1	1
32	A. M. OFFICER. TABLE 32.		1	U 33	1	R 32	1		N 33	1			V 32	1	1
33	ASST. 11. TABLE 33.		1	U 34	1	R 33	1		N 34	1			V 33	1	1
34	NPA OFFICER. TABLE 34.		1	U 35	1	R 34	1		N 35	1			V 34	1	1
35	DOCUMENTATION ROOM 3.		1	U 36	1	R 35	1		N 36	1			V 35	1	1
36	DOCUMENTATION - 2. TABLE 35.		1	U 37	1	R 36	1		N 37	1			V 36	1	1
37	DOCUMENTATION - 1. TABLE 36.		1	U 38	1	R 37	1		N 38	1			V 37	1	1
38	CM SANCTION - 2. TABLE 37.		2	U 39 , U 40	1	R 38	2		N 39 , N 40	1		1	V 38 , V 39	2	1
39	PROCESSING AREA - TABLE 38.		1	U 41	1	R 39	1		N 41	1			V 40	1	1
40	PROCESSING AREA - TABLE 39.		1	U 42	1	R 40	1		N 42					1	1
41	PROCESSING AREA - TABLE 40.		1	U 43	1	R 41	1		N 43	1			V 41	1	1
42	PROCESSING AREA - TABLE 41.		1	U 44	1	R 42	1		N 44	1			V 42	1	1
43	PROCESSING AREA - TABLE 42.		1	U 45	1	R 43	1		N 45					1	1
44	PROCESSING AREA - TABLE 43.		1	U 46	1	R 44	1		N 46	1			V 43	1	1

DATA TELE. POINTS FOR STATE BANK OF INDIA, RACPC EAST - CHANDKHEDA BRANCH, AHMEDABAD, AAO.

S.B. No.	Location of S.B.	UPS	UPS	UPS NO. ferruls	RPP	RAW POWER NO. ferruls	RJ-45	IP TELE.	I/O NO. ferruls	INTER COM TELE.	FAX TELE.	DIRECT TELE.	INTERCOM TELE. Ferruls	1 MTR. PATCH CORD	2 MTR. PATCH CORD
	BOQ ITEM NO.	BOQ A - 1.4	BOQ C - 5		BOQ C - 6		BOQ C - 8	BOQ C - 9		BOQ C - 15	BOQ C - 15	BOQ C - 15		BOQ C - 13	BOQ C - 14
45	PROCESSING AREA - TABLE 44.		1	U 47	1	R 45	1		N 47	1			V 44	1	1
46	PROCESSING AREA - TABLE 45.		1	U 48	1	R 46	1		N 48					1	1
47	PROCESSING AREA - TABLE 46.		1	U 49	1	R 47	1		N 49	1			V 45	1	1
48	PROCESSING AREA - TABLE 47.		1	U 50	1	R 48	1		N 50	1			V 46	1	1
49	PROCESSING AREA - TABLE 48.		1	U 51	1	R 49	1		N 51					1	1
50	PROCESSING AREA - TABLE 49.		1	U 52	1	R 50	1		N 52	1			V 47	1	1
51	CM SANCTION - 1. TABLE 50.		2	U 53 , U 54	1	R 51	2		N 53 , N 54	1		1	V 48 , V 49	2	1
52	AGM CABIN. TABLE 51.		2	U 55 , U 56	1	R 52	2	1	N 55 , N 56 , N 57	1	1	1	V 50 , V 51 , V 52	3	2
53	AGM CABIN. CC TV.		1	U 57											
54	CONPACTOR OFFICER TABLE 52.		1	U 58	1	R 53	1		N 58	1			V 53	1	1
55	CONFERENCE / VC ROOM TABLE 1,		1	U 59	1	R 54	1		N 59	1			V 54	1	1
56	CONFERENCE / VC ROOM TABLE 1,		1	U 60	1	R 55	1		N 60	1			V 55	1	1
57	CONFERENCE / VC ROOM WALL TV.		2	U 61 , U 62	1	R 56	2		N 61 , N 62					2	1
58	FUTURE EXPANTION TABLE 53.		1	U 63	1	R 57	1		N 63	1			V 56	1	1
59	FUTURE EXPANTION TABLE 54.		1	U 64	1	R 58	1		N 64	1			V 57	1	1
60	LCD TV 1.		1	U 65			1		N 65					1	1
61	LCD TV 2.		1	U 66			1		N 66					1	1
62	DATA RACK.		2	U 67 , U 68	1	R 59									
63	PANTRY.									1			V 58		
64	FIRE ALARM PANEL	1		U 69								1	V 59		
TOTAL		1	68		59		65	1		53	1	5		66	61